



F.1/6058032



multiHance[®]
(gadobenate dimeglumine)
injection, 529 mg/mL

HIGHLIGHTS OF PRESCRIBING INFORMATION
These highlights do not include all the information needed to use MultiHance safely and effectively. See full prescribing information for MultiHance.

MultiHance (gadobenate dimeglumine) Injection Initial U.S. Approval: 2004

WARNING: NEPHROGENIC SYSTEMIC FIBROSIS
See full prescribing information for complete boxed warning
Gadolinium-based contrast agents (GBCAs) increase the risk for NSF among patients with impaired elimination of the drugs. Avoid use of GBCAs in these patients unless the diagnostic information is essential and not available with non-contrasted MRI or other modalities.

- The risk for NSF appears highest among patients with:
 - chronic, severe kidney disease (GFR <30 mL/min/1.73m²), or
 - acute kidney injury.
- Screen patients for acute kidney injury and other conditions that may reduce renal function. For patients at risk for chronically reduced renal function (e.g. age > 60 years, hypertension or diabetes), estimate the glomerular filtration rate (GFR) through laboratory testing (5.1).

RECENT MAJOR CHANGES

Boxed Warning	12/2010
Warnings and Precautions (5.1)	12/2010
Patient Counseling Information (17)	12/2010
Indications and Usage (Pediatrics) (1)	3/2010

INDICATIONS AND USAGE
MultiHance is a gadolinium-based contrast agent indicated for intravenous use in magnetic resonance imaging (MRI) of the central nervous

FULL PRESCRIBING INFORMATION: CONTENTS*
*Sections or subsections omitted from the full prescribing information are not listed
WARNING: NEPHROGENIC SYSTEMIC FIBROSIS

- 1 INDICATIONS AND USAGE
- 2 DOSAGE AND ADMINISTRATION
- 3 DOSAGE FORMS AND STRENGTHS
- 4 CONTRAINDICATIONS
- 5 WARNINGS AND PRECAUTIONS
 - 5.1 Nephrogenic Systemic Fibrosis (NSF)
 - 5.2 Hypersensitivity Reactions
 - 5.3 Acute Renal Failure
 - 5.4 Extravasation and Injection Site Reactions
 - 5.5 Cardiac Arrhythmias
 - 5.6 Interference with Visualization of Certain Lesions
- 6 ADVERSE REACTIONS
 - 6.1 Clinical Trials Experience
 - 6.2 Post-marketing Experience
- 7 DRUG INTERACTIONS
 - 7.1 Transporter-Based Drug-Drug Interactions

system (CNS) in adults and children over 2 years of age to visualize lesions with abnormal blood brain barrier or abnormal vascularity of the brain, spine, and associated tissues. (1)

DOSAGE AND ADMINISTRATION-----
The recommended dose of MultiHance is 0.1 mmol/kg (0.2 mL/kg) administered as a rapid bolus intravenous injection. To ensure complete injection of the contrast medium, follow the injection with a saline flush of at least 5 mL. (2)

DOSAGE FORMS AND STRENGTHS-----
Each mL of MultiHance Injection contains 529 mg gadobenate dimeglumine and is available in single use vials. (3)

CONTRAINDICATIONS-----
MultiHance is contraindicated in patients with known allergic or hypersensitivity reactions to gadolinium-based contrast agents. (4)

WARNINGS AND PRECAUTIONS-----

- Nephrogenic Systemic Fibrosis has occurred in patients with impaired elimination of GBCAs. Higher than recommended dosing or repeated dosing appears to increase the risk (5.1)
- Hypersensitivity: anaphylactic/anaphylactoid reactions with cardiovascular, respiratory and cutaneous manifestations, ranging from mild to severe reactions including shock can occur. Monitor patients closely for need of emergency cardiorespiratory support (5.2)

ADVERSE REACTIONS-----
The most commonly reported adverse reactions are headache (1.8%) and nausea (1.6%). (6)

To report SUSPECTED ADVERSE REACTIONS, contact Bracco Diagnostics Inc at 1-800-257-5181 or FDA at 1-800-FDA-1088 or www.fda.gov/medwatch

See 17 for PATIENT COUNSELING INFORMATION
Revised: December 2010

- 8 USE IN SPECIFIC POPULATIONS
 - 8.1 Pregnancy
 - 8.3 Nursing Mothers
 - 8.4 Pediatric Use
 - 8.5 Geriatric Use
- 10 OVERDOSAGE
- 11 DESCRIPTION
- 12 CLINICAL PHARMACOLOGY
 - 12.1 Mechanism of Action
 - 12.2 Pharmacodynamics
 - 12.3 Pharmacokinetics
- 13 NONCLINICAL TOXICOLOGY
 - 13.1 Carcinogenesis, Mutagenesis, Impairment of Fertility
- 14 CLINICAL STUDIES
- 16 HOW SUPPLIED/STORAGE AND HANDLING
- 17 PATIENT COUNSELING INFORMATION
 - 17.1 Nephrogenic Systemic Fibrosis
 - 17.2 Common Adverse Reactions
 - 17.3 General Precautions

FULL PRESCRIBING INFORMATION

WARNING: NEPHROGENIC SYSTEMIC FIBROSIS
Gadolinium-based contrast agents (GBCAs) increase the risk for NSF among patients with impaired elimination of the drugs. Avoid use of GBCAs in these patients unless the diagnostic information is essential and not available with non-contrasted MRI or other modalities. NSF may result in fatal or debilitating systemic fibrosis affecting the skin, muscle and internal organs.

- The risk for NSF appears highest among patients with:
 - chronic, severe kidney disease (GFR <30 mL/min/1.73m²), or
 - acute kidney injury.
- Screen patients for acute kidney injury and other conditions that may reduce renal function. For patients at risk for chronically reduced renal function (e.g. age > 60 years, hypertension or diabetes), estimate the glomerular filtration rate (GFR) through laboratory testing.
- For patients at highest risk for NSF, do not exceed the recommended MultiHance dose and allow a sufficient period of time for elimination of the drug from the body prior to any re-administration [see Warnings and Precautions (5.1)]

1 INDICATIONS AND USAGE

MultiHance is indicated for intravenous use in magnetic resonance imaging (MRI) of the central nervous system (CNS) in adults and children over 2 years of age to visualize lesions with abnormal blood brain barrier or abnormal vascularity of the brain, spine, and associated tissues.

2 DOSAGE AND ADMINISTRATION

The recommended dose of MultiHance is 0.1 mmol/kg (0.2 mL/kg) administered as a rapid bolus intravenous injection. To ensure complete injection of the contrast medium, follow the injection with a saline flush of at least 5 mL. Inspect the MultiHance vial visually for particulate matter and discoloration prior to administration. Do not use the solution if it is discolored or particulate matter is present. Draw MultiHance into a syringe and inject using sterile technique.

Do not mix intravenous medications or parenteral nutrition solutions with MultiHance. Do not administer other medications in the same intravenous line with MultiHance. MultiHance vials are intended for single use only. Administer immediately after opening and discard any unused product.

3 DOSAGE FORMS AND STRENGTHS

MultiHance is a sterile, nonpyrogenic, clear, colorless, aqueous solution for intravenous use only, containing 529 mg gadobenate dimeglumine per mL.

4 CONTRAINDICATIONS

MultiHance is contraindicated in patients with known allergic or hypersensitivity reactions to gadolinium-based contrast agents [see Warnings and Precautions (5.2)].

5 WARNINGS AND PRECAUTIONS

5.1 Nephrogenic Systemic Fibrosis (NSF)
Gadolinium-based contrast agents (GBCAs) increase the risk for nephrogenic systemic fibrosis (NSF) among patients with impaired elimination of the drugs. Avoid use of GBCAs among these patients unless the diagnostic information is essential and not available with non-contrast enhanced MRI or other modalities. The GBCA-associated NSF risk appears highest for patients with chronic, severe kidney disease (GFR <30 mL/min/1.73m²) as well as patients with acute kidney injury. The risk appears lower for patients with chronic, moderate kidney disease (GFR <30-59 mL/min/1.73m²) and little, if any, for patients with chronic, mild kidney disease (GFR 60-89 mL/min/1.73m²). NSF may result in fatal or debilitating fibrosis affecting the skin, muscle and internal organs. Report any diagnosis of NSF following MultiHance administration to Bracco Diagnostics (1-800-257-5181) or FDA (1-800-FDA-1088 or www.fda.gov/medwatch). Screen patients for acute kidney injury and other conditions that may reduce renal function. Features of acute kidney injury consist of rapid (over hours to days) and usually reversible decrease in kidney function, commonly in the setting of surgery, severe infection, injury or drug-induced kidney toxicity. Serum creatinine levels and estimated GFR may not reliably assess renal function in the setting of acute kidney injury. For patients at risk for chronically reduced renal function (e.g., age > 60 years, diabetes mellitus or chronic hypertension), estimate the GFR through laboratory testing.

Among the factors that may increase the risk for NSF are repeated or higher than recommended doses of a GBCA and the degree of renal impairment at the time of exposure. Record the specific GBCA and the dose administered to a patient. For patients at highest risk for NSF, do not exceed the recommended MultiHance dose and allow a sufficient period of time for elimination of the drug prior to re-administration. For patients receiving hemodialysis, physicians may consider the prompt initiation of hemodialysis following the administration of a GBCA in order to enhance the contrast agent's elimination. The usefulness of hemodialysis in the prevention of NSF is unknown [see Dosage and Administration (2) and Clinical Pharmacology (12)].

5.2 Hypersensitivity Reactions

Anaphylactic and anaphylactoid reactions have been reported, involving cardiovascular, respiratory, and/or cutaneous manifestations. Some patients experienced circulatory collapse and died. In most cases, initial symptoms occurred within minutes of MultiHance administration and resolved with prompt emergency treatment. Prior to MultiHance administration, ensure the availability of personnel trained and medications to treat hypersensitivity reactions. Additionally, consider the risk for hypersensitivity reactions, especially in patients with a history of hypersensitivity reactions or a history of asthma or other allergic disorders. Observe patients for signs and symptoms of a hypersensitivity reaction during and for up to 2 hours after MultiHance administration.

5.3 Acute Renal Failure

In patients with renal insufficiency, acute renal failure requiring dialysis or worsening renal function have occurred with the use of gadolinium-based contrast agents. The risk of renal failure may increase with increasing dose of the contrast agent. Screen all patients for renal dysfunction by obtaining a history and/or laboratory tests. Consider follow-up renal function assessments for patients with a history of renal dysfunction.

5.4 Extravasation and Injection Site Reactions

Extravasation of MultiHance may lead to injection site reactions, characterized by local pain or burning sensation, swelling, blistering, and necrosis. In animal experiments, local reactions including eschar and necrosis were noted even on Day 8 post perivenous injection of MultiHance. Exercise caution to avoid local extravasation during intravenous administration of MultiHance. If extravasation occurs, evaluate and treat as necessary if local reactions develop.

5.5 Cardiac Arrhythmias

Cardiac arrhythmias have been observed in patients receiving MultiHance in clinical trials [see Adverse Reactions (6.1)]. Assess patients for underlying conditions or medications that predispose to arrhythmias. A double-blind, placebo-controlled, 24-hour post dose continuous monitoring, crossover study in 47 subjects evaluated the effect of 0.2 mmol/kg MultiHance on ECG intervals, including QTc. The average changes in QTc values compared with placebo were minimal (< 5 msec). QTc prolongation between 30 and 60 msec were noted in 20 subjects who received MultiHance vs. 11 subjects who received placebo. Prolongations ≥ 61 msec were noted in 6 subjects who received MultiHance and in 3 subjects who received placebo. None of these subjects had associated malignant arrhythmias. The effects on QTc by MultiHance dose, other drugs, and medical conditions were not systematically studied.

5.6 Interference with Visualization of Certain Lesions

Certain lesions seen on non-contrast images may not be seen on contrast-images. Exercise caution when interpreting contrast MR images in the absence of companion non-contrast MR images.

6 ADVERSE REACTIONS

6.1 Clinical Trials Experience

Because clinical trials are conducted under widely varying conditions, adverse reaction rates observed in the clinical trials of a drug cannot be directly compared to rates in the clinical trials of another drug and may not reflect the rates observed in practice.

Adult

In clinical trials, a total of 2982 adult subjects (119 healthy volunteers and 2863 patients) received MultiHance at doses ranging from 0.005 to 0.4 mmol/kg. There were 1724 (58%) men and 1258 (42%) women with a mean age of 55.1 years (range 18 to 92 years). A total of 2644 (89%) subjects were Caucasian, 84 (3%) Black, 162 (5%) Asian, 29 (1%) Hispanic, 18 (1%) in other racial groups, and for 45 (2%) subjects, race was not reported. The most commonly reported adverse reactions in adult subjects who received MultiHance were headache (1.8%) and nausea (1.6%). Most adverse reactions were mild to moderate in intensity. Four subjects experienced serious adverse reactions. One subject with a history of seizures experienced convulsions 17 minutes after the administration of MultiHance. Another subject with a history of recent myocardial infarction (MI) and congestive heart failure (CHF) experienced acute pulmonary edema within 10 minutes after the administration of 30 mL of MultiHance. The third subject developed acute necrotizing pancreatitis. The fourth subject experienced an anaphylactoid reaction with laryngismus and dyspnea [see Warnings and Precautions (5.2)]. Adverse reactions that occurred in at least 0.5% of 2982 adult subjects who received MultiHance are listed below (Table 1), in decreasing order of occurrence within each system.

TABLE 1: ADVERSE REACTIONS REPORTED IN ≥ 0.5% OF ADULT SUBJECTS WHO RECEIVED MultiHance IN CLINICAL TRIALS	
Number of subjects dosed	2982
Number of subjects with any adverse reaction	450 (15.1%)
Gastrointestinal Disorders	
Nausea	48 (1.6%)
Vomiting	14 (0.5%)
General Disorders and Administration Site Disorders	
Feeling Hot	31 (1.0%)
Injection Site Reaction	40 (1.3%)
Nervous System Disorders	
Headache	54 (1.8%)
Taste perversion	25 (0.8%)
Paresthesia	23 (0.8%)
Dizziness	22 (0.7%)
Skin and Subcutaneous Tissue Disorders	
Rash	19 (0.6%)
Vascular Disorders	
Hypertension	16 (0.5%)

The following adverse reactions occurred in less than 0.5% of the 2982 adult subjects who received MultiHance:

Blood and Lymphatic System Disorders: Basophilia, decreased hemoglobin, hemolysis, leukocytosis, leukopenia;
Cardiac Disorders: Arrhythmia, atrial fibrillation, bradycardia, chest discomfort, ECG abnormality (bundle branch block, complete AV block, first-degree AV block, inverted T wave, prolonged PR interval, prolonged QT interval, shortened QT interval), myocardial ischemia, palpitations, supraventricular extrasystoles, tachycardia, ventricular arrhythmia, ventricular extrasystoles;
Ear and Labyrinth Disorders: Ear pain, tinnitus;

Eye Disorders: Eyelid edema, ocular hyperemia, visual disturbance;
Gastrointestinal Disorders: Acute necrotizing pancreatitis, abdominal pain, constipation, diarrhea, dry mouth, dyspepsia, fecal incontinence, increased pruritus in patients with cirrhosis, vomiting;
General Disorders and Administration Site Conditions: Asthenia, back pain, chest pain, chills, fever, infection, injection site extravasation, injection site inflammation, injection site pain, malaise, rigors;
Immune System Disorders: Anaphylactic and anaphylactoid reactions, anaphylactic shock, hypersensitivity reactions;
Investigations: Abnormal laboratory test (includes changes in CPK, creatinine, ferritin, transferrin, total iron binding capacity), bilirubinemia, hyperglycemia, hyperkalemia, hypocalcemia, hypoglycemia, hyponatremia, decreased blood albumin, increased alkaline phosphatase, increased GGT, increased LDH, increased serum iron, increased SGOT, increased SGPT;
Musculoskeletal and Connective Tissue Disorders: Muscle spasms, myalgia, myositis;
Nervous System Disorders: Aphasia, convulsion, hemiplegia, hypertonia, hypoesthesia, paralysis, parosmia, stupor, syncope, tremor;
Renal and Urinary Disorders: Albuminuria, glycosuria, hematuria, proteinuria, urinary frequency, urinary tract infection;
Respiratory, Thoracic and Mediastinal Disorders: Acute pulmonary edema, cough, dyspnea, hyperventilation, laryngospasm, nasal congestion, obstructive airway disorder, pulmonary embolus, wheezing;
Skin and Subcutaneous Tissue Disorders: Facial edema, hyperhidrosis, pruritus, sweating, urticaria;
Vascular Disorders: Hypotension.

Pediatric

In clinical trials, 217 pediatric subjects received MultiHance at a dose of 0.1 mmol/kg. A total of 112 (52%) subjects were male and the overall mean age was 8.3 years (range 4 days to 17 years). A total of 168 (77%) subjects were Caucasian, 12 (6%) Black, 12 (6%) Asian, 24 (11%), Hispanic, and 1 (<1%) in other racial groups. Adverse reactions were reported for 14 (6.5%) of the subjects. The frequency and the nature of the adverse reactions were similar to those seen in the adult patients. The most commonly reported adverse reactions were vomiting (1.4%), pyrexia (0.9%), and hyperhidrosis (0.9%). No subject died during study participation. A serious adverse reaction of worsening of vomiting was reported for one (0.5%) patient with a brain tumor (glioma) for which a causal relationship to MultiHance could not be excluded.

6.2 Post-Marketing Experience

The following adverse reactions have been identified during post approval use of MultiHance. Because these reactions are reported voluntarily from a population of uncertain size, it is not always possible to reliably estimate their frequency or establish a causal relationship to drug exposure. Anaphylactic, anaphylactoid and hypersensitivity reactions manifested with various degrees of severity up to anaphylactic shock, loss of consciousness and death. The reactions generally involved signs or symptoms of respiratory, cardiovascular, and/or mucocutaneous abnormalities. Extravasation of MultiHance may lead to injection site reactions, characterized by local pain or burning sensation, swelling, blistering, and necrosis [see Warnings and Precautions (5.4)].

7 DRUG INTERACTIONS

7.1 Transporter-Based Drug-Drug Interactions

MultiHance and other drugs may compete for the canalicular multispecific organic anion transporter (MOAT) also referred to as MRP2 or ABCC2). Therefore MultiHance may prolong the systemic exposure of drugs such as cisplatin, anthracyclines (e.g. doxorubicin, daunorubicin), vinca alkaloids (e.g. vincristine), methotrexate, etoposide, tamoxifen, and paclitaxel. In particular, consider the potential for prolonged drug exposure in patients with decreased MOAT activity (e.g. Dubin Johnson syndrome).

8 USE IN SPECIFIC POPULATIONS

8.1 Pregnancy

Pregnancy Category C. MultiHance has been shown to be teratogenic in rabbits when given intravenously administered at 2 mmol/kg/day (6 times the human dose based on body surface area) during organogenesis (day 6 to 18) inducing microphthalmia/small eye and/or focal retinal fold in 3 fetuses from 3 separate litters. In addition, MultiHance intravenously administered at 3 mmol/kg/day (10 times the human dose based on body surface area) has been shown to increase intrauterine deaths in rabbits. There was no evidence that MultiHance induced teratogenic effects in rats at doses up to 2 mmol/kg/day (3 times the human dose based on body surface area), however, rat dams exhibited no systemic toxicity at this dose. There were no adverse effects on the birth, survival, growth, development and fertility of the F1 generation at doses up to 2 mmol/kg in a rat peri- and post-natal (Segment III) study. There are no adequate and well-controlled studies in pregnant women. MultiHance should be used during pregnancy only if potential benefit justifies the potential risk to the fetus.

8.3 Nursing Mothers

It is not known to what extent gadobenate dimeglumine is excreted in human milk. It is known from rat experiments that less than 0.5% of the administered dose is transferred via milk from mother to neonates. Breast feeding should be discontinued prior to the administration of MultiHance and should not be restarted until at least 24 hours after the administration of MultiHance.

8.4 Pediatric Use

A total of 217 pediatric subjects (93% of subjects aged 2 years and above) were studied in clinical trials. No overall differences in safety or effectiveness were observed between these pediatric subjects and the adult subjects. The safety and efficacy of MultiHance in neonates and infants (ages 0-2 years) have not been established. The risk of NSF related to gadolinium may be increased in these patients due to their immature kidney function.



8.5 Geriatric Use

Of the total number of 2982 adult subjects in clinical studies of MultiHance, 27% were 65 and over. No overall differences in safety or effectiveness were observed between these elderly subjects and the younger subjects.

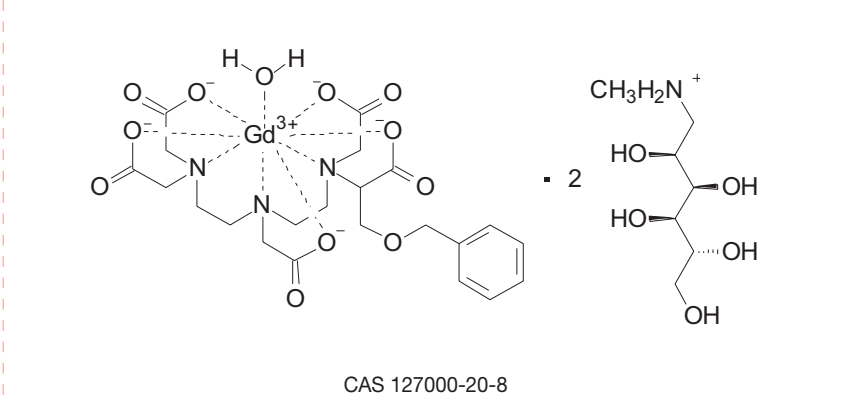
The drug is known to be substantially excreted by the kidney, and the risk of toxic reactions to MultiHance may be greater in patients with impaired renal function. Because elderly patients are more likely to have decreased renal function it may be useful to monitor renal function.

10 OVERDOSAGE

Clinical consequences of overdose with MultiHance have not been reported. Treatment of an overdose should be directed toward support of vital functions and prompt institution of symptomatic therapy. In a Phase 1 clinical study, doses up to 0.4 mmol/kg were administered to patients. MultiHance has been shown to be dialyzable [***see Clinical Pharmacology (12.3)***].

11 DESCRIPTION

MultiHance injection is supplied as a sterile, nonpyrogenic, clear, colorless, aqueous solution intended for intravenous use only. Each mL of MultiHance contains 529 mg gadobenate dimeglumine and water for injection. MultiHance contains no preservatives. Gadobenate dimeglumine is chemically designated as (4RS)-[4-carboxy-5,8,11-tris(carboxymethyl)-1-phenyl-2-oxa-5,8,11-triazatridecan-13-oato(5-)] gadolinate(2-) dihydrogen compound with 1-deoxy-1-(methylamino)-D-glucitol (1:2) with a molecular weight of 1058.2 and an empirical formula of C22H28GdN3O11 • 2C7H17NO5. The structural formula is as follows:



MULTIHANCE has a pH of 6.5-7.5. Pertinent physicochemical parameters are provided below:

Osmolality	1.970 osmol/kg @ 37°C
Viscosity	5.3 mPas @ 37°C
Density	1.220 g/mL @ 20°C

MULTIHANCE has an osmolality 6.9 times that of plasma (285 mOsmol/kg water) and is hypertonic under conditions of use.

12 CLINICAL PHARMACOLOGY

12.1 Mechanism of Action

Gadobenate dimeglumine is a paramagnetic agent and, as such, develops a magnetic moment when placed in a magnetic field. The large magnetic moment produced by the paramagnetic agent results in a large local magnetic field, which can enhance the relaxation rates of water protons in its vicinity leading to an increase of signal intensity (brightness) of tissue.

In magnetic resonance imaging (MRI), visualization of normal and pathological tissue depends in part on variations in the radiofrequency signal intensity that occur with 1) differences in proton density; 2) differences of the spin-lattice or longitudinal relaxation times (T1); and 3) differences in the spin-spin or transverse relaxation time (T2). When placed in a magnetic field, gadobenate dimeglumine decreases the T1 and T2 relaxation time in target tissues. At recommended doses, the effect is observed with greatest sensitivity in the T1-weighted sequences.

12.2 Pharmacodynamics

Unlike other tested paramagnetic contrast agents (See Table 2), MultiHance demonstrates weak and transient interactions with serum proteins that causes slowing in the molecular tumbling dynamics, resulting in strong increases in relaxivity in solutions containing serum proteins. The improved relaxation effect can contribute to increased contrast-to-noise ratio and lesion-to-brain ratio, which may improve visualization.

TABLE 2: RELAXIVITY (mM ⁻¹ s ⁻¹) OF GADOLINIUM CHELATES	Human plasma	
	r ₁	r ₂
Gadobenate	9.7 ¹	12.5 ¹
Gadopentetate	4.9 ¹	6.3 ¹
Gadodiamide	5.4 ²	---
Gadoteridol	5.4 ²	---

r₁ and r₂ relaxivities indicate the efficiency in shortening T1 and T2 relaxation times, respectively.

¹ In heparinized human plasma, at 39°C.

² In citrated human plasma, at 37°C.

--- Not available

MultiHance injection does not cross the intact blood-brain barrier and, therefore, does not enhance normal brain or lesions that have a normal blood-brain barrier, e.g., cysts, mature post-operative scars. However, disruption of the blood-brain barrier or abnormal vascularity allows enhancement by MultiHance of lesions such as neoplasms, abscesses, and infarcts. Uptake of MultiHance into hepatocytes has been demonstrated.

12.3 Pharmacokinetics

Three single-dose intravenous studies were conducted in 32 healthy male subjects to assess the pharmacokinetics of gadobenate dimeglumine. The doses administered in these studies ranged from 0.005 to 0.4 mmol/kg. Upon injection, the meglumine salt is completely dissociated from the gadobenate dimeglumine complex. Thus, the pharmacokinetics is based on the assay of gadobenate ion, the MRI contrast effective ion in gadobenate dimeglumine. Data for plasma concentration and area under the curve demonstrated linear dependence on the administered dose. The pharmacokinetics of gadobenate ion following intravenous administration can be best described using a two-compartment model.

Distribution

Gadobenate ion has a rapid distribution half-life (reported as mean ± SD) of 0.084 ± 0.012 to 0.605 ± 0.072 hours. Volume of distribution of the central compartment ranged from 0.074 ± 0.017 to 0.158 ± 0.038 L/kg, and estimates of volume of distribution by area ranged from 0.170 ± 0.016 to 0.282 ± 0.079 L/kg. These latter estimates are approximately equivalent to the average volume of extracellular body water in man. In vitro studies showed no appreciable binding of gadobenate ion to human serum proteins.

Elimination

Gadobenate ion is eliminated predominately via the kidneys, with 78% to 96% of an administered dose recovered in the urine. Total plasma clearance and renal clearance estimates of gadobenate ion were similar, ranging from 0.093 ± 0.010 to 0.133 ± 0.270 L/hr/kg and 0.082 ± 0.007 to 0.104 ± 0.039 L/hr/kg, respectively. The clearance is similar to that of substances that are subject to glomerular filtration. The mean elimination half-life ranged from 1.17 ± 0.26 to 2.02 ± 0.60 hours. A small percentage of the administered dose (0.6% to 4%) is eliminated via the biliary route and recovered in feces.

Metabolism

There was no detectable biotransformation of gadobenate ion. Dissociation of gadobenate ion in vivo has been shown to be minimal, with less than 1% of the free chelating agent being recovered alone in feces.

Pharmacokinetics in Special Populations

Renal Impairment: A single intravenous dose of 0.2 mmol/kg of MultiHance was administered to 20 subjects with impaired renal function (6 men and 3 women with moderate renal impairment [urine creatinine clearance >30 to <60 mL/min] and 5 men and 6 women with severe renal impairment [urine creatinine clearance >10 to <30 mL/min]). Mean estimates of the elimination half-life were 6.1 ± 3.0 and 9.5 ± 3.1 hours for the moderate and severe renal impairment groups, respectively as compared with 1.0 to 2.0 hours in healthy volunteers.

Hemodialysis: A single intravenous dose of 0.2 mmol/kg of MultiHance was administered to 11 subjects (5 males and 6 females) with end-stage renal disease requiring hemodialysis to determine the pharmacokinetics and dialyzability of gadobenate. Approximately 72% of the dose was recovered by hemodialysis over a 4-hour period. The mean elimination half-life on dialysis was 1.21 ± 0.29 hours as compared with 42.4 ± 24.4 hours when off dialysis.

Hepatic Impairment: A single intravenous dose of 0.1 mmol/kg of MultiHance was administered to 11 subjects (8 males and 3 females) with impaired liver function (Class B or C modified Child-Pugh Classification). Hepatic impairment had little effect on the pharmacokinetics of MultiHance with the parameters being similar to those calculated for healthy subjects.

Gender, Age, Race: A multiple regression analysis performed using pooled data from several pharmacokinetic studies found no significant effect of sex upon the pharmacokinetics of gadobenate. Clearance appeared to decrease slightly with increasing age. Since variations due to age appeared marginal, dosage adjustment for geriatric population is not recommended. Pharmacokinetic differences due to race have not been systematically studied.

Pediatric: A population pharmacokinetic analysis incorporated data from 25 healthy subjects (14 males and 11 females) and 15 subjects undergoing MR imaging of the central nervous system (7 males and 8 females) between ages of 2 and 16 years. The subjects received a single intravenous dose of 0.1 mmol/kg of MultiHance. The geometric mean C_{max} was 62.3 µg/mL (n=16) in children 2 to 5 years of age, and 64.2 µg/mL (n=24) in children older than 5 years. The geometric mean AUC_{0-∞} was 77.9 µg-h/mL in children 2-5 years of age (n=16) and 82.6 µg-h/mL in children older than 5 years (n=24). The geometric mean half-life was 1.2 hours in children 2 to 5 years of age and 0.93 hours in children older than 5 years. There was no significant gender-related difference in the pharmacokinetic parameters in the pediatric patients. Over 80% of the dose was recovered in urine after 24 hours.

13 NONCLINICAL TOXICOLOGY

13.1 Carcinogenesis, Mutagenesis, Impairment of Fertility

Long-term animal studies have not been performed to evaluate the carcinogenic potential of MultiHance.

The results for MultiHance were negative in the following genetic toxicity studies: 1) in vitro bacteria reverse mutation assays, 2) an in vitro gene mutation assay in mammalian cells, 3) an in vitro chromosome aberration assay, 4) an in vitro unscheduled DNA synthesis assay, and 5) an in vivo micronucleus assay in rats.

MultiHance had no effect on fertility and reproductive performance at IV doses of up to 2 mmol/kg/day (3 times the human dose on body surface basis) for 13 weeks in male rats and for 32 days in female rats. However, vacuolation in testes and abnormal spermatogenic cells

were observed when MultiHance was intravenously administered to male rats at 3 mmol/kg/day (5 times the human dose on body surface basis) for 28 days. The effects were not reversible following 28-day recovery period. The effects were not reported in dog and monkey studies (at doses up to about 11 and 10 times the human dose on body surface basis for dogs (28 days dosing) and monkeys (14 days dosing), respectively).

14 CLINICAL STUDIES

MultiHance was evaluated in 426 adult patients in 2 controlled clinical trials of the central nervous system (Study A and Study B), enrolling 217 men and 209 women with a mean age of 52 years (range 18 to 88 years). The racial and ethnic representations were 88% Caucasian, 6% Black, 4% Hispanic, 1% Asian, and 1% other racial or ethnic groups. These trials were designed to compare MultiHance contrast MRI to non-contrast MRI alone. In Study A, patients highly suspected of having a lesion(s) of the CNS based on nuclear medicine imaging, computed tomography (CT), contrast CT, MRI, contrast- MRI, or angiography were randomized to receive two MRI evaluations with 0.05 mmol/kg (n=140) or 0.1 mmol/kg (n=136) of MultiHance. In Study B, patients with known metastatic disease to the CNS were randomized to receive two MRI evaluations with 0.05 mmol/kg (n=74) or 0.1 mmol/kg (n=76) of MultiHance. MRI scans were performed pre-contrast and within 5 minutes after each injection. The studies were designed to evaluate the effect of MultiHance MRI compared to the non-contrast MRI on a lesion level. Pre-contrast, post-contrast, and pre-plus-post contrast images (paired images) were independently evaluated by three blinded readers. The images were evaluated for the following endpoints using a scale from 0 to 4: the degree of lesion border delineation, the degree of visualization of lesion internal morphology, and the degree of lesion contrast enhancement. Lesion counting was also performed for the pre-contrast and paired image sets.

The 0.1 mmol/kg dose of MultiHance demonstrated consistently better visualization for all readers for all visualization endpoints. However, the 0.05 mmol/kg dose of MultiHance provided inconsistent visualization results between readers.

Comparison of pre-contrast versus post-contrast (0.1 mmol/kg) images showed that the mean score differences were significant and favored contrast for subjects in Study B (all subjects with known metastatic lesions) and for subjects with known tumors in Study A. However, the mean score differences between the pre-contrast and post-contrast images were not significant for non-tumor patients in Study A. These negative results may be attributed to a lack of lesion enhancement in non-tumor CNS disease.

Table 3 shows a comparison of paired images (pre-and post-contrast) versus pre-contrast images with respect to the difference in the mean score and with respect to the proportion of lesions read as better, worse, or the same as the pre-contrast MRI images. Table 3 shows that based on a lesion-level analysis 0.1 mmol/kg MultiHance provided a statistically significant improvement for the three structural parameters evaluated. Also, more lesions were seen in the paired images than in the pre-contrast images alone.

TABLE 3: LESION LEVEL RESULTS OF MRI CENTRAL NERVOUS SYSTEM ADULT STUDIES WITH 0.1 MMOL/KG MULTIHANCE						
	Study A			Study B		
	Reader 1	Reader 2	Reader 3	Reader 1	Reader 2	Reader 3
Endpoints	N = 395	N = 384	N = 299	N = 245	N = 275	N = 254
Border Delineation: Difference of Means (a)	0.8*	0.6*	0.8*	1.8*	1.5*	1.9*
Worse (b)	44 (11%)	61 (16%)	57 (19%)	13 (5%)	24 (9%)	15 (6%)
Same	146 (37%)	168 (44%)	89 (30%)	11 (5%)	19 (7%)	18 (7%)
Better	205 (52%)	155 (40%)	153 (51%)	221 (90%)	232 (84%)	221 (87%)
Internal Morphology: Difference of Means	0.8*	0.6*	0.7*	1.7*	1.4*	2.1*
Worse	37 (10%)	63 (17%)	62 (21%)	13 (5%)	26 (10%)	14 (5%)
Same	147 (37%)	151 (39%)	84 (28%)	16 (7%)	22 (8%)	22 (9%)
Better	211 (53%)	170 (44%)	153 (51%)	216 (88%)	227 (82%)	218 (86%)
Contrast Enhancement: Difference of Means	0.7*	0.5*	0.8*	1.9*	1.3*	1.9*
Worse	75 (19%)	74 (19%)	50 (17%)	13 (5%)	32 (12%)	17 (7%)
Same	148 (37%)	152 (40%)	109 (36%)	11 (5%)	21 (7%)	14 (5%)
Better	172 (44%)	158 (41%)	140 (47%)	221 (90%)	222 (81%)	223 (88%)
(a) Difference of means = (paired mean) - (pre mean)						
(b) Worse = paired score is less than the pre score						
Same = paired score is the same as the pre score						
Better = paired score is greater than the pre score						
* Statistically significant for the mean (paired t test)						

The efficacy and safety of MultiHance were evaluated in 92 pediatric patients with known or highly suspected disease of the central nervous system. MRI scans were performed pre-contrast and within 3 to 10 minutes following the administration of MultiHance 0.1 mmol/kg. Pre-contrast, post-contrast, and pre-plus-post contrast images (paired images) were independently evaluated by three blinded readers on a lesion level. The images were evaluated for the same endpoints as in the adult central nervous system trials using a scale from 0 to 4: the degree of lesion border delineation, the degree of visualization of lesion internal morphology, and the degree of lesion contrast enhancement. Lesion counting was also performed for the pre-contrast and paired

image sets. The pre-contrast versus the paired image set was the primary comparison. Forty-nine percent of study subjects were male and the overall mean age was 10.6 years (range 2 to 17 years). The racial and ethnic representations were 77% Caucasian, 13% Asian, 5% Black, and 4% other racial or ethnic groups. MultiHance increased lesion border delineation, lesion internal morphology, and lesion contrast enhancement relative to non-contrast and these results were comparable to those seen in adults.

16 HOW SUPPLIED/STORAGE AND HANDLING

How Supplied

MultiHance (gadobenate dimeglumine) is a clear, colorless solution containing 529 mg gadobenate dimeglumine per mL. MultiHance is supplied in glass vials; each single dose vial is rubber stoppered with an aluminum seal and the contents are sterile. MultiHance is supplied in boxes of:

Five 5 mL single dose 10 mL vials (NDC 0270-5164-12)

Five 10 mL single dose 20 mL vials (NDC 0270-5164-13)

Five 15 mL single dose 20 mL vials (NDC 0270-5164-14)

Five 20 mL single dose 20 mL vials (NDC 0270-5164-15)

Storage and Handling

Inspect the MultiHance vial visually for particulate matter and discoloration prior to administration. Do not use the solution if it is discolored or particulate matter is present. Do not mix intravenous medications or parenteral nutrition solutions with MultiHance. Do not administer other medications in the same intravenous line with MultiHance because of the potential for chemical incompatibility. Draw MultiHance into a syringe and inject using sterile technique. MultiHance vials are intended for single use only. Administer immediately after opening and discard any unused product. Store at 25°C (77°F), excursions permitted to 15-30°C (59-86°F) [see USP Controlled Room Temperature]. Do not freeze.

17 PATIENT COUNSELING INFORMATION

17.1 Nephrogenic Systemic Fibrosis

Instruct patients to inform their physician if they:

- have a history of kidney and/or liver disease, or
- have recently received a GBCA.

GBCAs increase the risk for NSF among patients with impaired elimination of the drugs. To counsel patients at risk for NSF:

- Describe the clinical manifestations of NSF
- Describe procedures to screen for the detection of renal impairment

Instruct the patients to contact their physician if they develop signs or symptoms of NSF following MultiHance administration, such as burning, itching, swelling, scaling, hardening and tightening of the skin; red or dark patches on the skin; stiffness in joints with trouble moving, bending or straightening the arms, hands, legs or feet; pain in the hip bones or ribs; or muscle weakness.

17.2 Common Adverse Reactions

Inform patients that they may experience:

- reactions along the venous injection site, such as mild and transient burning or pain or feeling of warmth or coldness at the injection site
- side effects of feeling hot, nausea, and headache

17.3 General Precautions

Instruct patients scheduled to receive MultiHance to inform their physician if they:

- are pregnant or breast feeding
- have a history of renal disease, heart disease, seizure, asthma or allergic respiratory diseases
- are taking any medications
- have any allergies to any of the ingredients of MultiHance.

	Rx only	
	US Patent No. 4,916,246	
	Manufactured for	
	Bracco Diagnostics Inc. - Princeton, NJ 08543	
Revised		
July 2011	By BIPSO GmbH - 78224 Singen (Germany)	F.1/6058032





Multipack™

NOT FOR DIRECT INFUSION

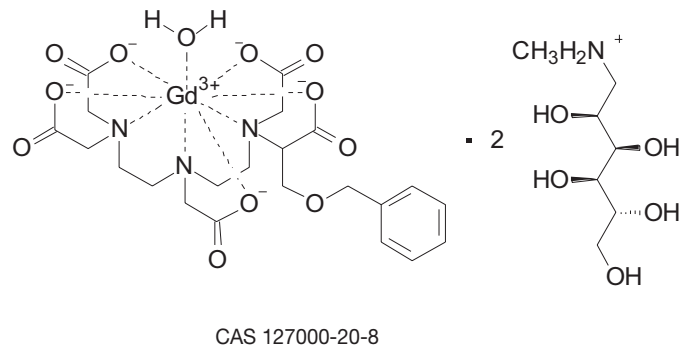
WARNING: NEPHROGENIC SYSTEMIC FIBROSIS

Gadolinium-based contrast agents (GBCAs) increase the risk for NSF among patients with impaired elimination of the drugs. Avoid use of GBCAs in these patients unless the diagnostic information is essential and not available with non-contrasted MRI or other modalities. NSF may result in fatal or debilitating systemic fibrosis affecting the skin, muscle and internal organs.

- The risk for NSF appears highest among patients with:
• chronic, severe kidney disease (GFR <30 mL/min/1.73m²), or
• acute kidney injury.
• Screen patients for acute kidney injury and other conditions that may reduce renal function. For patients at risk for chronically reduced renal function (e.g. age > 60 years, hypertension or diabetes), estimate the glomerular filtration rate (GFR) through laboratory testing.
• For patients at highest risk for NSF, do not exceed the recommended MultiHance dose and allow a sufficient period of time for elimination of the drug from the body prior to re-administration (see WARNINGS).

DESCRIPTION

MULTIHANCE injection is supplied as a sterile, nonpyrogenic, clear, colorless aqueous solution intended for intravenous use only. Each mL of solution contains 529 mg gadobenate dimeglumine. MULTIHANCE contains no preservatives. Gadobenate dimeglumine is chemically designated as (4RS)-[4-carboxy-5,8,11-tris(carboxymethyl)-1-phenyl-2-oxa-5,8,11-triazatridecan-13-oato(5-)] gadolinate(2-) dihydrogen compound with 1-deoxy-1-(methylamino)-D-glucitol (1:2) with a molecular weight of 1058.2 and an empirical formula of C22H26GdN3O11 • 2C7H17NO5. The structural formula is as follows:



CAS 127000-20-8

MULTIHANCE has a pH of 6.5-7.5. Pertinent physicochemical parameters are provided below:

Table with 2 columns: Parameter (Osmolality, Viscosity, Density) and Value (1.970 osmol/kg @ 37°C, 5.3 mPas @ 37°C, 1.220 g/mL @ 20°C)

MULTIHANCE has an osmolality 6.9 times that of plasma (285 mOsmol/kg water) and is hypertonic under conditions of use.

CLINICAL PHARMACOLOGY

Gadobenate dimeglumine is a paramagnetic agent and, as such, develops a magnetic moment when placed in a magnetic field. The large magnetic moment produced by the paramagnetic agent results in a large local magnetic field, which can enhance the relaxation rates of water protons in its vicinity leading to an increase of signal intensity (brightness) of tissue. In magnetic resonance imaging (MRI), visualization of normal and pathological tissue depends in part on variations in the radiofrequency signal intensity that occur with 1) differences in proton density; 2) differences of the spin-lattice or longitudinal relaxation times (T1); and 3) differences in the spin-spin or transverse relaxation time (T2). When placed in a magnetic field, gadobenate dimeglumine decreases the T1 and T2 relaxation time in target tissues. At recommended doses, the effect is observed with greatest sensitivity in the T1-weighted sequences.

Pharmacokinetics

Three single-dose intravenous studies were conducted in 32 healthy male subjects to assess the pharmacokinetics of gadobenate dimeglumine. The doses administered in these studies ranged from 0.005 to 0.4 mmol/kg. Upon injection, the meglumine salt is completely dissociated from the gadobenate dimeglumine complex. Thus, the pharmacokinetics is based on the assay of gadobenate ion, the MRI contrast effective ion in gadobenate dimeglumine. Data for plasma concentration and area under the curve demonstrated linear dependence on the administered dose. The pharmacokinetics of gadobenate ion following intravenous administration can be best described using a two-compartment model.

Distribution: Gadobenate ion has a rapid distribution half-life (reported as mean ± SD) of 0.084 ± 0.012 to 0.605 ± 0.072 hours. Volume of distribution of the central compartment ranged from 0.074 ± 0.017 to 0.158 ± 0.038 L/kg, and estimates of volume of distribution by area ranged from 0.170 ± 0.016 to 0.282 ± 0.079 L/kg. These latter estimates are approximately equivalent to the average volume of extracellular body water in man. In vitro studies showed no appreciable binding of gadobenate ion to human serum proteins.

Metabolism: There was no detectable biotransformation of gadobenate ion. Dissociation of gadobenate ion in vivo has been shown to be minimal, with less than 1% of the free chelating agent being recovered alone in feces.

Elimination: Gadobenate ion is eliminated predominately via the kidneys, with 78% to 96% of an administered dose recovered in the urine. Total plasma clearance and renal clearance estimates of gadobenate ion were similar, ranging from 0.093 ± 0.010 to 0.133 ± 0.270 L/hr/kg and 0.082 ± 0.007 to 0.104 ± 0.039 L/hr/kg, respectively. The clearance is similar to that of substances that are subject to glomerular filtration. The mean elimination half-life ranged from 1.17 ± 0.26 to 2.02 ± 0.60 hours. A small percentage of the administered dose (0.6% to 4%) is eliminated via the biliary route and recovered in feces.

Pharmacokinetics in Special Populations

Renal Impairment: A single intravenous dose of 0.2 mmol/kg of MULTIHANCE was administered to 20 subjects with impaired renal function (6 men and 3 women with moderate renal impairment [urine creatinine clearance >30 to <60 mL/min] and 5 men and 6 women with severe renal impairment [urine creatinine clearance >10 to <30 mL/min]). Mean estimates of the elimination half-life were 6.1 ± 3.0 and 9.5 ± 3.1 hours for the moderate and severe renal impairment groups, respectively as compared with 1.0 to 2.0 hours in healthy volunteers. However, the overall extent of elimination of gadobenate was not influenced by impaired renal function. Also, no differences were noted in renally impaired patients in the rate and type of adverse events reported compared with healthy volunteers, and no deterioration in renal function was observed in this population following the administration of MULTIHANCE. Therefore, dosage adjustment is not recommended (See PRECAUTIONS).

Hemodialysis: A single intravenous dose of 0.2 mmol/kg of MULTIHANCE was administered to 11 subjects (5 males and 6 females) with end-stage renal disease requiring hemodialysis to determine the pharmacokinetics and dialyzability of gadobenate. Approximately 72% of the dose was recovered by hemodialysis over a 4-hour period. The mean elimination half-life on dialysis was 1.21 ± 0.29 hours as compared with 42.4 ± 24.4 hours when off dialysis.

Hepatic Impairment: A single intravenous dose of 0.1 mmol/kg of MULTIHANCE was administered to 11 subjects (8 males and 3 females) with impaired liver function (Class B or C modified Child-Pugh Classification). Hepatic impairment had little effect on the pharmacokinetics of MULTIHANCE with the parameters being similar to those calculated for healthy subjects. (See PRECAUTIONS)

Gender: A multiple regression analysis performed using pooled data from several pharmacokinetic studies found no significant effect of sex upon the pharmacokinetics of gadobenate.

Age: Clearance appeared to decrease slightly with increasing age. Since variations due to age appeared marginal, dosage adjustment for geriatric population is not recommended.

Race: Pharmacokinetic differences due to race have not been systematically studied.

Drug-Drug Interactions: Pharmacokinetic drug interaction studies have not been performed.

Pharmacodynamics

Unlike other tested paramagnetic contrast agents (See Table 1), MULTIHANCE demonstrates weak and transient interactions with serum proteins that causes slowing in the molecular tumbling dynamics, resulting in strong increases in relaxivity in solutions containing serum proteins. The improved relaxation effect can contribute to increased contrast-to-noise ratio and lesion-to-brain ratio, which may improve visualization.

TABLE 1: RELAXIVITY (mM⁻¹s⁻¹) OF GADOLINIUM CHELATES

Table with 3 columns: Chelate (Gadobenate, Gadopentetate, Gadodiamide, Gadoteridol) and Relaxivity (r1, r2) in Human plasma.

r1 and r2 relaxivities indicate the efficiency in shortening T1 and T2 relaxation times, respectively. 1 In heparinized human plasma, at 39°C. 2 In citrated human plasma, at 37°C. --- Not available

MULTIHANCE (gadobenate dimeglumine) injection does not cross the intact blood-brain barrier and, therefore, does not enhance normal brain or lesions that have a normal blood-brain barrier, e.g., cysts, mature post-operative scars, etc. However, disruption of the blood-brain barrier or abnormal vascularity allows enhancement of gadobenate dimeglumine in lesions such as neoplasms, abscesses, and infarcts. Uptake into hepatocytes has been demonstrated for gadobenate. The pharmacokinetics of MULTIHANCE in various lesions is not known.

Effects on Electrocardiography

ECG parameters were investigated in a double-blind, placebo-controlled, 24-hour post dose continuous monitoring, crossover study conducted in 47 subjects [24 healthy volunteers and 23 patients with coronary artery disease (CAD)] designed to evaluate the effect of 0.2 mmol/kg MULTIHANCE on ECG intervals, including QTc. Results of the analyses indicate that average changes in QTc values compared with placebo were minimal (< 5 msec). For most individual subjects changes in QTc values were less than 20 msec and evenly distributed between increases and decreases of the same magnitude. QTc prolongation between 30 and 60 msec were noted in 20 subjects (9 healthy volunteers and 11 CAD patients) who received MULTIHANCE vs. 11 subjects (6 volunteers and 5 CAD patients), who received placebo. Prolongations ≥61 msec were noted in 6 subjects (2 normal volunteers and 4 CAD patients) who received MULTIHANCE and in 3 subjects (0 volunteers and 3 CAD patients) who received placebo. None of these subjects had associated malignant arrhythmias.

CLINICAL TRIALS

A total of 560 patients were evaluated in 2 controlled clinical trials of the central nervous system (Study A and Study B) with MULTIHANCE. Of these 560 patients, 426 received MULTIHANCE. Of the 426 MULTIHANCE patients, there were 217 men and 209 women with a mean age of 52 years (range 18 to 88 years). The racial and ethnic representations were 88% Caucasian, 6% Black, 4% Hispanic, 1% Asian and 1% other racial or ethnic groups. These trials were designed to evaluate the results of MULTIHANCE contrast MRIs in comparison to non-contrast MRIs alone. In Study A, 410 eligible patients were highly suspected of having a lesion(s) of the CNS based on nuclear medicine imaging, computed tomography (CT), contrast-enhanced CT, MRI, contrast-enhanced MRI, or angiography. After enrollment, patients were randomized to receive two MRI evaluations with 0.05 mmol/kg or 0.1 mmol/kg of MULTIHANCE or with 0.1 mmol/kg of an approved gadolinium contrast agent. Of these 410 patients, 140 received 0.05 mmol/kg of MULTIHANCE, 136 received 0.1 mmol/kg of MULTIHANCE and 134 received an approved gadolinium contrast agent. In Study B, 150 eligible patients had known metastatic disease to the CNS. After enrollment, patients were randomized to receive two MRI evaluations with 0.05 mmol/kg or 0.1 mmol/kg of MULTIHANCE. Of these 150 patients, 74 received 0.05 mmol/kg of MULTIHANCE as the first dose and 76 received 0.1 mmol/kg of MULTIHANCE as the first dose. MRI scans were performed pre-contrast and within 5 minutes after each injection. The studies were designed to evaluate the effect of the first, single dose of MULTIHANCE MRI compared to the non-contrast MRI on a lesion level.

Pre-contrast, post-contrast, and pre-plus-post contrast images (paired images) were independently evaluated by three blinded readers. The images were evaluated for the following endpoints using a scale from 0 to 4: the degree of lesion border delineation, the degree of visualization of lesion internal morphology, and the degree of lesion contrast enhancement. Lesion counting was also performed for the pre-contrast and paired image sets. The pre-contrast versus post-contrast comparison on a lesion level was prospective whereas, the pre-contrast versus paired comparison was ad hoc.

In the prespecified pre-contrast versus post-contrast comparisons, the mean score differences between the pre-contrast and the post-contrast were significant for subjects in Study B (all subjects with known metastatic lesions) and for a subset of subjects with known tumors in Study A. However, the mean score differences between the pre-contrast and post-contrast comparisons were not significant for the subset of non-tumor patients in Study A. These negative results may be attributed to a lack of lesion enhancement for these patients' underlying non-tumor CNS disease.

As shown in Table 2, the first row of each endpoint group represents the difference in the mean score of the paired MRI reads from the mean score of the pre-contrast MRI reads alone on a lesion level analysis. Also, the table shows the number of lesions whose paired MRI images were read as better, worse, or the same as the pre-contrast MRI images. In Table 2 for these endpoints, when read in combination with the non-contrast images, 0.1 mmol/kg MULTIHANCE provided a statistically significant improvement over baseline. Also, more lesions were seen in the paired images than in the pre-contrast images alone. With the 0.1 mmol/kg dose, the images demonstrated consistently better visualization for all readers for all visualization endpoints. However, the 0.05 mmol/kg dose provided inconsistent visualization between readers. An additional analysis of the difference in the mean score of the post contrast MRI reads from the mean score of the pre-contrast MRI reads alone for the three endpoints on a patient level (the mean score across all lesions within a patient) is shown in Table 3. For these endpoints, 0.1 mmol/kg MULTIHANCE provided a statistically significant improvement over baseline.

TABLE 2: LESION LEVEL RESULTS OF MRI CENTRAL NERVOUS SYSTEM ADULT STUDIES WITH 0.1 MMOL/KG MULTIHANCE

Table with 7 columns: Study A (Reader 1, Reader 2, Reader 3) and Study B (Reader 1, Reader 2, Reader 3). Rows include Endpoints, Border Delineation, Internal Morphology, Contrast Enhancement, and Difference of Means for various categories (Worse, Same, Better).

(a) Difference of means = (paired mean) - (pre mean)
(b) Worse = paired score is less than the pre score
Same = paired score is the same as the pre score
Better = paired score is greater than the pre score
(c) Paired = side-by-side pre and post MULTIHANCE
* Statistically significant for the mean (paired t test)

TABLE 3: PATIENT LEVEL RESULTS OF MRI CENTRAL NERVOUS SYSTEM ADULT STUDIES WITH 0.1 MMOL/KG MULTIHANCE

Table with 7 columns: Study A (Reader 1, Reader 2, Reader 3) and Study B (Reader 1, Reader 2, Reader 3). Rows include Endpoints, Border Delineation, Internal Morphology, Contrast Enhancement, and Difference of Means for various categories (Worse, Same, Better).

(a) Difference of means = (post MULTIHANCE mean) - (pre mean)
† Endpoints are on a patient level, with each endpoint being the mean score across all lesions within a patient
* Statistically significant for the mean (paired t test)

INDICATIONS AND USAGE

MULTIHANCE is indicated for intravenous use in magnetic resonance imaging (MRI) of the CNS in adults to visualize lesions with abnormal blood brain barrier or abnormal vascularity of the brain, spine, and associated tissues.

CONTRAINDICATIONS

MULTIHANCE is contraindicated in patients with known allergic or hypersensitivity reactions to gadolinium or any other ingredients, including benzyl alcohol.

WARNINGS

Nephrogenic Systemic Fibrosis (NSF)

Gadolinium-based contrast agents (GBCAs) increase the risk for nephrogenic systemic fibrosis (NSF) among patients with impaired elimination of the drugs. Avoid use of GBCAs among these patients unless the diagnostic information is essential and not available with non-contrast enhanced MRI or other modalities. The GBCA-associated NSF risk appears highest for patients with chronic, severe kidney disease (GFR <30 mL/min/1.73m²) as well as patients with acute kidney injury. The risk appears lower for patients with chronic, moderate kidney disease (GFR 30-59 mL/min/1.73m²) and little, if any, for patients with chronic, mild kidney disease (GFR 60-89 mL/min/1.73m²). NSF may result in fatal or debilitating fibrosis affecting the skin, muscle and internal organs. Report any diagnosis of NSF following MultiHance administration to Bracco Diagnostics (1-800-257-5181) or FDA (1-800-FDA-1088 or www.fda.gov/medwatch).

Screen patients for acute kidney injury and other conditions that may reduce renal function. Features of acute kidney injury consist of rapid (over hours to days) and usually reversible decrease in kidney function, commonly in the setting of surgery, severe infection, injury or drug-induced kidney toxicity. Serum creatinine levels and estimated GFR may not reliably assess renal function in the setting of acute kidney injury. For patients at risk for chronically reduced renal function (e.g., age > 60 years, diabetes mellitus or chronic hypertension), estimate the GFR through laboratory testing.

Among the factors that may increase the risk for NSF are repeated or higher than recommended doses of a GBCA and the degree of renal impairment at the time of exposure. Record the specific GBCA and the dose administered to a patient. For patients at highest risk for NSF, do not exceed the recommended MULTIHANCE dose and allow a sufficient period of time for elimination of the drug prior to re-administration. For patients receiving hemodialysis, physicians may consider the prompt initiation of hemodialysis following the administration of a GBCA in order to enhance the contrast agent’s elimination. The usefulness of hemodialysis in the prevention of NSF is unknown (**see CLINICAL PHARMACOLOGY and DOSAGE AND ADMINISTRATION**).

Hypersensitivity Reactions

Anaphylactic and anaphylactoid reactions have been reported, involving cardiovascular, respiratory and/or cutaneous manifestations and ranging from mild to severe. Some patients experienced circulatory collapse and died. In most cases, initial symptoms occurred within minutes of MULTIHANCE administration and resolved with prompt emergency treatment.

Prior to MULTIHANCE administration, ensure the availability of personnel trained and medications to treat hypersensitivity reactions. Additionally, consider the risk for hypersensitivity reactions, especially in patients with a history of hypersensitivity reactions or a history of asthma or other allergic disorders. Observe patients for signs and symptoms of a hypersensitivity reaction during and for up to 2 hours after MULTIHANCE administration.

Sickle Cell Disease and other hemolytic anemia

Deoxygenated sickle erythrocytes have been shown *in vitro* studies to align perpendicular to a magnetic field which may result in vaso-occlusive complications *in vivo*. The enhancement of magnetic moment by MULTIHANCE may possibly potentiate sickle erythrocyte alignment. MULTIHANCE has not been studied in patients with sickle cell anemia and other hemoglobinopathies.

Patients with other hemolytic anemias have not been adequately evaluated following administration of MULTIHANCE to exclude the possibility of increased hemolysis.

PRECAUTIONS

General

Diagnostic procedures that involve the use of contrast agents should be carried out under direction of a physician with the prerequisite training and a thorough knowledge of the procedure to be performed.

Although more lesions are generally visualized on contrast-enhanced images than on unenhanced images, lesions seen on unenhanced images may not all be seen on contrast-enhanced images. CAUTION SHOULD BE EXERCISED WHEN A CONTRAST-ENHANCED INTERPRETATION IS MADE IN THE ABSENCE OF A COMPANION UNENHANCED MRI.

Appropriate facilities should be available for coping with any complications of the procedures, as well as for emergency treatment of severe reactions to the contrast itself. The possibility of a reaction, including serious, life-threatening, or fatal, anaphylactic or cardiovascular reactions, or other idiosyncratic reactions, should always be considered, especially in those patients with a history of a known clinical hypersensitivity or a history of asthma or other allergic respiratory disorders.

Injection site reactions

In rabbits, perivenous injection of MULTIHANCE provoked more severe local reactions than intravenous injection in rabbits. In these animal experiments, local reactions including eschar and necrosis were noted even on Day 8 post perivenous injection of MULTIHANCE. Therefore, caution should be exercised to avoid local extravasation during intravenous administration of MULTIHANCE. If extravasation occurs, subjects should be monitored and treated as necessary if local reactions develop.

Electrocardiographic Changes

The effects of QTc by dose, or other drugs, and medical conditions were not systematically studied. Several atrial and ventricular arrhythmias and atrio-ventricular conduction defects were observed in subjects who received MULTIHANCE. Caution should be exercised in patients who may be using medications or who may have underlying metabolic, cardiac, or other abnormalities that may predispose to cardiac arrhythmias. (**see ADVERSE REACTIONS BELOW**).

Drug Interactions

MULTIHANCE and other drugs may compete for the cannalicular multispecific organic anion transporter (cMOAT also referred to as MRP2 or ABCC2) sites. Therefore appropriate caution should be exercised in those patients who receive drugs such as cisplatin, anthracyclines (such as doxorubicin, daunorubicin), vinca alkaloids (such as vincristine), methotrexate, etoposide, tamoxifen, taxol (paclitaxel), or others. Caution should also be exercised in those subjects in whom the cMOAT sites may be affected due to underlying metabolic disorders such as Dubin Johnson syndrome, etc. (**see also Laboratory Test Interactions below**).

Laboratory Test Interactions

Transient increases in serum ferritin were observed in some patients that were attributed to the underlying disease. In patients with renal disease, transient increases in urine zinc were detected and these changes were shown not to be clinically significant. Transient asymptomatic elevations in bilirubin over baseline were observed in patients with underlying hepatic metabolic disorders such as von Willebrands’ disease and Wilsons’ disease.

Information for Patients

Patients scheduled to receive MULTIHANCE should be instructed to inform their physician if the patient:

- is pregnant or breast feeding.
- has anemia or diseases that affect the red blood cells.
- has a history of renal and/or hepatic disease, heart disease, seizure, hemoglobinopathies, or asthma or allergic respiratory diseases.
- is taking any medications.
- has any allergies to any of the ingredients of MULTIHANCE.
- has recently received a GBCA.

GBCAs increase the risk for NSF among patients with impaired elimination of the drugs. To counsel patients at risk for NSF:

- Describe the clinical manifestations of NSF
- Describe procedures to screen for the detection of renal impairment

Instruct the patients to contact their physician if they develop signs or symptoms of NSF following MultiHance administration, such as burning, itching, swelling, scaling, hardening and tightening of the skin; red or dark patches on the skin; stiffness in joints with trouble moving, bending or straightening the arms, hands, legs or feet; pain in the hip bones or ribs; or muscle weakness.

Carcinogenesis, Mutagenesis and Impairment of Fertility

Long-term animal studies have not been performed to evaluate the carcinogenic potential of MULTIHANCE.

The results for MULTIHANCE were negative in the following genetic toxicity studies: 1) *in vitro* bacteria reverse mutation assays, 2) an *in vitro* gene mutation assay in mammalian cells, 3) an *in vitro* chromosomal aberration assay, 4) an *in vitro* unscheduled DNA synthesis assay, and 5) an *in vivo* micronucleus assay in rats.

MULTIHANCE had no effect on fertility and reproductive performance at IV doses of up to 2 mmol/kg/day (3 times the human dose on body surface basis) for 13 weeks in male rats and for 32 days in female rats. However, vacuolation in testes and abnormal spermatogenic cells were observed when MULTIHANCE was intravenously administered to male rats at 3 mmol/kg/day (5 times the human dose on body surface basis) for 28 days. The effects were not reversible following 28-day recovery period. The effects were not reported in dog and monkey studies (at doses up to about 11 and 10 times the human dose on body surface basis for dogs (28 days dosing) and monkeys (14 days dosing), respectively.

Pregnancy

Pregnancy Category C

MULTIHANCE has been shown to be teratogenic in rabbits when given intravenously administered at 2 mmol/kg/day (6 times the human dose based on body surface area) during organogenesis (day 6 to 18) inducing microphthalmia / small eye and / or focal retinal fold in 3 fetuses from 3 separate litters. In addition, MULTIHANCE intravenously administered at 3 mmol/kg/day (10 times the human dose based on body surface area) has been shown to increase intrauterine deaths in rabbits. There was no evidence that MULTIHANCE induced teratogenic effects in rats at doses up to 2 mmol/kg/day (3 times the human dose based on body surface area), however, rat dams exhibited no systemic toxicity at this dose. There were no adverse effects on the birth, survival, growth, development and fertility of the F1 generation at doses up to 2 mmol/kg in a rat peri- and post-natal (Segment III) study.

There are no adequate and well-controlled studies in pregnant women. MULTIHANCE should be used during pregnancy only if potential benefit justifies the potential risk to the fetus.

Nursing Mothers

It is not known to what extent gadobenate dimeglumine is excreted in human milk. It is known from rat experiments that less than 0.5% of the administered dose is transferred via milk from mother to neonates. Breast feeding should be discontinued prior to the administration of MULTIHANCE and should not be restarted until at least 24 hours after the administration of MULTIHANCE.

Geriatric Use

Of the total number of 2982 adult subjects in clinical studies of MULTIHANCE, 27% were 65 and over. No overall differences in safety or effectiveness were observed between these elderly subjects and the younger subjects.

The drug is known to be substantially excreted by the kidney, and the risk of toxic reactions to MULTIHANCE may be greater in patients with impaired renal function. Because elderly patients are more likely to have decreased renal function it may be useful to monitor renal function.

Pediatric Use

Safety and effectiveness in pediatric patients have not been established.

ADVERSE REACTIONS

In clinical trials, a total of 2982 adult subjects (119 healthy volunteers and 2863 patients) received MULTIHANCE at doses ranging from 0.005 to 0.4 mmol/kg. There were 1724 (58%) men and 1258 (42%) women with a mean age of 55.1 years (range 18 to 92 years). A total of 2644 (89%) subjects were Caucasian, 84 (3%) Black, 162 (5%) Asian, 29 (1%) Hispanic, 18 (1%) in other racial groups, and for 45 (2%) subjects, race was not reported. Among the 2863 patients, 65 subjects were adult patients who participated in special population pharmacokinetics or cardiac electrophysiology studies (n = 20, renal impairment patients; n = 11, renal dialysis patients; n = 11, hepatic impairment patients; n = 23, ECG cardiovascular patients).

Of the 2982 adult subjects who received MULTIHANCE, 531 (17.8%) reported at least one adverse event. In comparison, 35 (27.6%) of the 127 subjects (38 healthy volunteers and 89 patients) who received placebo in clinical trials reported at least one adverse event. The most

commonly reported adverse events in adult subjects who received MULTIHANCE were headache (2.2%) and nausea (1.8%). Most adverse events were mild to moderate in intensity. Two subjects (0.1%) died and in 13 additional subjects (0.4%), 15 serious adverse events were reported. The two deaths were attributable to the patients’ underlying medical conditions. In four of the 13 subjects who experienced serious adverse events, a causal relationship to MULTIHANCE could not be excluded. One subject with a history of seizures experienced convulsions 17 minutes after the administration of MULTIHANCE. Another subject with a history of recent MI and possibly CHF experienced acute pulmonary edema within 10 minutes after the administration of 30 mL of MULTIHANCE. In the third subject who developed acute necrotizing pancreatitis, sufficient information was not available to exclude a causal relationship to MULTIHANCE. Anaphylactoid reaction was suspected in the fourth subject who experienced laryngismus in conjunction with dyspnea. (**See WARNINGS and PRECAUTIONS, General**).

The incidence of adverse events for a subgroup of adult patients with known or suspected lesions of the CNS who participated in Study A (**See CLINICAL TRIALS**) was comparable among the 276 patients who received MULTIHANCE (28.6%), and the 134 patients who received an approved gadolinium contrast agent (32.1%). The most commonly reported adverse events in patients who received MULTIHANCE for CNS imaging were headache (5.8%), dizziness (3.6%), and taste perversion (3.3%). The other adverse events that were reported in patients who received MULTIHANCE are similar in nature to those reported in the adult population as a whole. Adverse events that occurred in at least 0.5% of 2982 adult subjects who received MULTIHANCE are listed below in related categories, in decreasing order of occurrence within each system, and regardless of causality. The incidence for placebo-treated subjects and the CNS subpopulation are also shown for purposes of comparison.

TABLE 4: ADVERSE EVENTS REPORTED IN ≥ 0.5% OF ADULT SUBJECTS WHO RECEIVED MULTIHANCE IN CLINICAL TRIALS			
	All Adult Subjects	CNS Studies	
	Placebo	MULTIHANCE	MULTIHANCE
Number of subjects dosed	127	2982	659
Number of subjects with any adverse event	35 (27.6%)	531 (17.8%)	148 (22.5%)
Body as a Whole			
Headache	6 (4.7%)	67 (2.2%)	25 (3.8%)
Injection site reaction	4 (3.1%)	44 (1.5%)	8 (1.2%)
Pain	0	19 (0.6%)	2 (0.3%)
Cardiovascular System			
Hypertension	4 (3.1%)	22 (0.7%)	2 (0.3%)
Tachycardia	1 (0.8%)	14 (0.5%)	2 (0.3%)
Digestive System			
Nausea	2 (1.6%)	55 (1.8%)	12 (1.8%)
Vomiting	1 (0.8%)	16 (0.5%)	4 (0.6%)
Diarrhea	3 (2.4%)	14 (0.5%)	1 (0.2%)
Hemic and Lymphatic System			
Anemia	0	16 (0.5%)	3 (0.5%)
Nervous System			
Vasodilatation	1 (0.8%)	31 (1. 0%)	8 (1.2%)
Paresthesia	2 (1.6%)	24 (0.8%)	3 (0.5%)
Dizziness	2 (1.6%)	22 (0.7%)	10 (1.5%)
Skin and Appendages			
Rash	2 (1.6%)	21 (0.7%)	4 (0.6%)
Special Senses			
Taste perversion	3 (2.4%)	25 (0.8%)	9 (1.4%)

Adverse reactions that occurred in less than 0.5% of the 2982 adult subjects who received MULTIHANCE included:

Body as a Whole: Abdominal pain, anaphylactic reaction, asthenia, back pain, chest pain, chills, facial edema, fever, infection, infiltration of contrast, injection site inflammation, injection site pain, malaise.

Cardiovascular System: Acute pulmonary edema, arrhythmia, atrial fibrillation, bradycardia, ECG abnormality (includes bundle branch block, complete AV block, first-degree AV block, inverted T wave, prolonged PR interval, prolonged QT interval, shortened QT interval), hypotension, myocardial ischemia, palpitations, supraventricular extrasystoles, syncope, ventricular arrhythmia, ventricular extrasystoles (**See PRECAUTIONS**).

Digestive System: Constipation, dyspepsia, fecal incontinence, acute necrotizing pancreatitis, increased pruritus in patients with cirrhosis.

Hemic and Lymphatic System: Basophilia, hemolysis, leukocytosis, leukopenia.

Metabolic and Nutritional System: Abnormal laboratory test (includes changes in CPK, creatinine, ferritin, transferrin, total iron binding capacity), bilirubinemia, hyperglycemia,

hyperkalemia, hyperlipemia, hypocalcemia, hypoglycemia, hyponatremia, hypoproteinemia, increased alkaline phosphatase, increased GGT, increased LDH, increased serum iron, increased SGOT, increased SGPT, peripheral edema, thirst.

Musculoskeletal System: Myalgia, myositis.

Nervous System: Cold feeling, convulsion, dry mouth, hemiplegia, hypertonia, hypesthesia, increased salivation, paralysis, stupor, tremor, aphasia.

Respiratory System: Dyspnea, hyperventilation, increased cough, laryngismus, lung edema, rhinitis, pulmonary embolus.

Skin and Appendages: Pruritus, sweating, urticaria.

Special Senses: Abnormal vision, ear pain, eye disorder, parosmia, tinnitus.

Urogenital System: Albuminuria, glycosuria, hematuria, urinary frequency, urinary incontinence, urinary tract infection, urinary urgency.

Post-marketing Experience:

Since the post-marketing reactions are reported voluntarily from a population of uncertain size, it is not always possible to reliably estimate their frequency or establish a causal relationship to drug exposure.

Anaphylactic, anaphylactoid and hypersensitivity reactions have been reported. These reactions manifested with various degrees of severity up to anaphylactic shock, loss of consciousness and death. The reactions generally involved signs or symptoms of respiratory, cardiovascular, and/or mucocutaneous abnormalities.

OVERDOSAGE

Clinical consequences of overdosage with MULTIHANCE have not been reported. Treatment of an overdosage should be directed toward support of vital functions and prompt institution of symptomatic therapy. In a Phase I clinical study, doses up to 0.4 mmol/kg were administered to patients.

MULTIHANCE has been shown to be dialyzable. (**See CLINICAL PHARMACOLOGY - Pharmacokinetics.**)

DOSAGE AND ADMINISTRATION

The recommended dose of MULTIHANCE is 0.1 mmol/kg (0.2 mL/kg) administered as a rapid bolus intravenous injection.

To ensure complete injection of the contrast medium, the injection should be followed by a saline flush of at least 5 mL. It is important to ensure that the i.v. needle or cannula is correctly inserted into a vein.

DRUG HANDLING

Parenteral products should be inspected visually for particulate matter and discoloration prior to administration. Do not use the solution if it is discolored or particulate matter is present. Any unused portion must be discarded in accordance with regulations dealing with the disposal of such materials.

Concurrent medications or parenteral nutrition should not be physically mixed with contrast agents and should not be administered in the same intravenous line because of the potential for chemical incompatibility.

Directions for Proper Use of MULTIHANCE Multipack

The pharmacy bulk package is used as a multiple dose container with an appropriate transfer device to fill empty syringes.

MULTIHANCE Multipack injection should be drawn into the syringe and administered using sterile technique. Unused portions of the drug must be discarded.

When MULTIHANCE Multipack injection is to be injected using plastic disposable syringes, the agent should be drawn into the syringe and used immediately.

- The transferring of MULTIHANCE (gadobenate dimeglumine) injection from the Pharmacy Bulk Package should be performed in a suitable work area, such as a laminar flow hood, utilizing aseptic technique.
- The container closure may be penetrated only one time, utilizing a suitable transfer device. Once the pharmacy bulk package is punctured, it should not be removed from the aseptic work area during the entire period of use.
- The withdrawal of container contents should be accomplished without delay. However, should this not be possible, a maximum time of 8 hours from initial closure entry is permitted to complete fluid transfer operation. Any unused MULTIHANCE Multipack injection must be discarded 8 hours after initial puncture of the bulk package.
- Temperature of container after the closure has been entered should not exceed 25°C (77°F).

HOW SUPPLIED

MULTIHANCE Multipack (gadobenate dimeglumine) injection is a clear, colorless solution containing 529 mg gadobenate dimeglumine per mL. MULTIHANCE Multipack is supplied in glass bottles; each multidose bottle is rubber stoppered with an aluminum seal and the contents are sterile. MULTIHANCE is supplied in boxes of:

Five 50 mL Pharmacy Bulk Packages (NDC 0270-5264-16)

Five 100 mL Pharmacy Bulk Packages (NDC 0270-5264-17)

STORAGE

Store at 25°C (77°F), excursions permitted to 15-30°C (59-86°F) [see USP Controlled Room Temperature]. Do not freeze.

	Rx only	
	US Patent No. 4,916,246	
	Manufactured for	
	Bracco Diagnostics Inc. - Princeton, NJ 08543	
Revised	By BIPSO GmbH - 78224 Singen (Germany)	F.1/6058046
July 2011		